

Efficient Versatile Practical

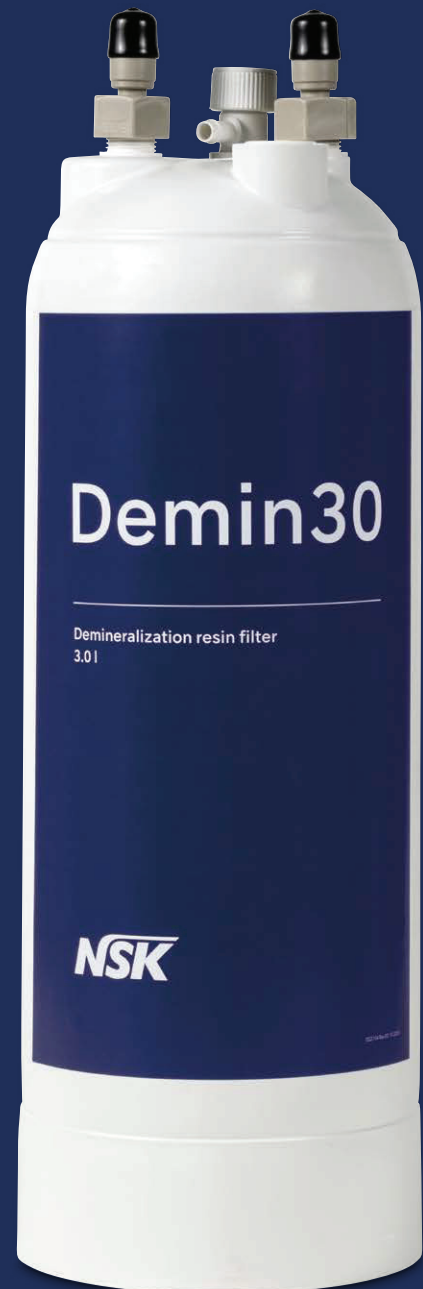
New Demin30 demineralization system

Demin30 is a demineralization system with mixed-bed and ion-exchange resin, which enables the complete demineralization of the water.

Easy to install on various autoclave models, offering optimal performance and protection of sterilised instruments, extending the life of autoclaves or other reprocessing devices.

The filter can be positioned on the worktop or inside the sterilisation cabinet.

Demin30 can also supply demineralized water to a second autoclave.



1 EFFICIENCY



Demin30 filters up to 580 litres* of water with a single cartridge, guaranteeing an excellent level of purification. Its automatic water loading and unloading feature saves time, maximising efficiency and convenience.

*Calculated based on water with a conductivity of 250µS/cm

2 VERSATILITY



Modular system for supplying one or two autoclaves, also available in an EN 1717 compliant version for water back-flow prevention. Installation adaptable to various autoclave models.

3 USABILITY



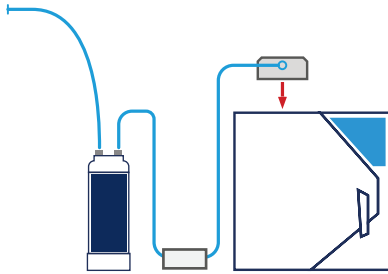
Cartridges can be replaced quickly with no need for tools. The cartridge must be replaced when the water conductivity exceeds 15 µS/cm.

iClave 18 and 24 give an automatic warning when this value is reached to indicate that the filter needs to be replaced.

Demin30

SYSTEM FOR THE COMPLETE DEMINERALIZATION OF WATER

NEW

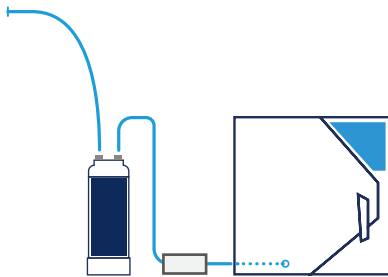


MODEL **Demin30 - Kit EN 1717**
CODE **98001010**

MODEL **Demin30 - Kit 2nd Autoclave EN 1717**
CODE **98001030**

Kit supplied with a top-loading water system, in accordance with EN 1717.

EN 1717 Standard: "Protection against pollution of potable water in water installations and general requirements for devices to prevent pollution caused by back-flow"



MODEL **Demin30 - Kit**
CODE **98001000**

MODEL **Demin30 - Kit 2nd Autoclave**
CODE **98001020**

Kit supplied with a direct connection system at the back of the autoclave using the supplied water filling hose (Ø 1/4") and solenoid valve (24 VDC and 0.5 A).



MODEL **Demin30 Demineralization Resin Filter**
CODE **230000**

Demin30 Cartridge
Dimensions: diameter 135 mm, height 385 mm

USE AND INSTALLATION

Demin30 is a system for the automatic supply of demineralized water for autoclaves. The filter must only be supplied with potable water, with an inlet pressure between 2 and 3 bar. Thanks to the supplied hose, it is possible to drain used water automatically.

REPLACING THE CARTRIDGE

Cartridge replacement can be carried out by the clinic staff without the use of tools. It must be replaced within a maximum of one year after installation, even if the cartridge is not spent. Dispose of the used cartridge according to Decision 2014/955/EU (CER 15 02 03).

